



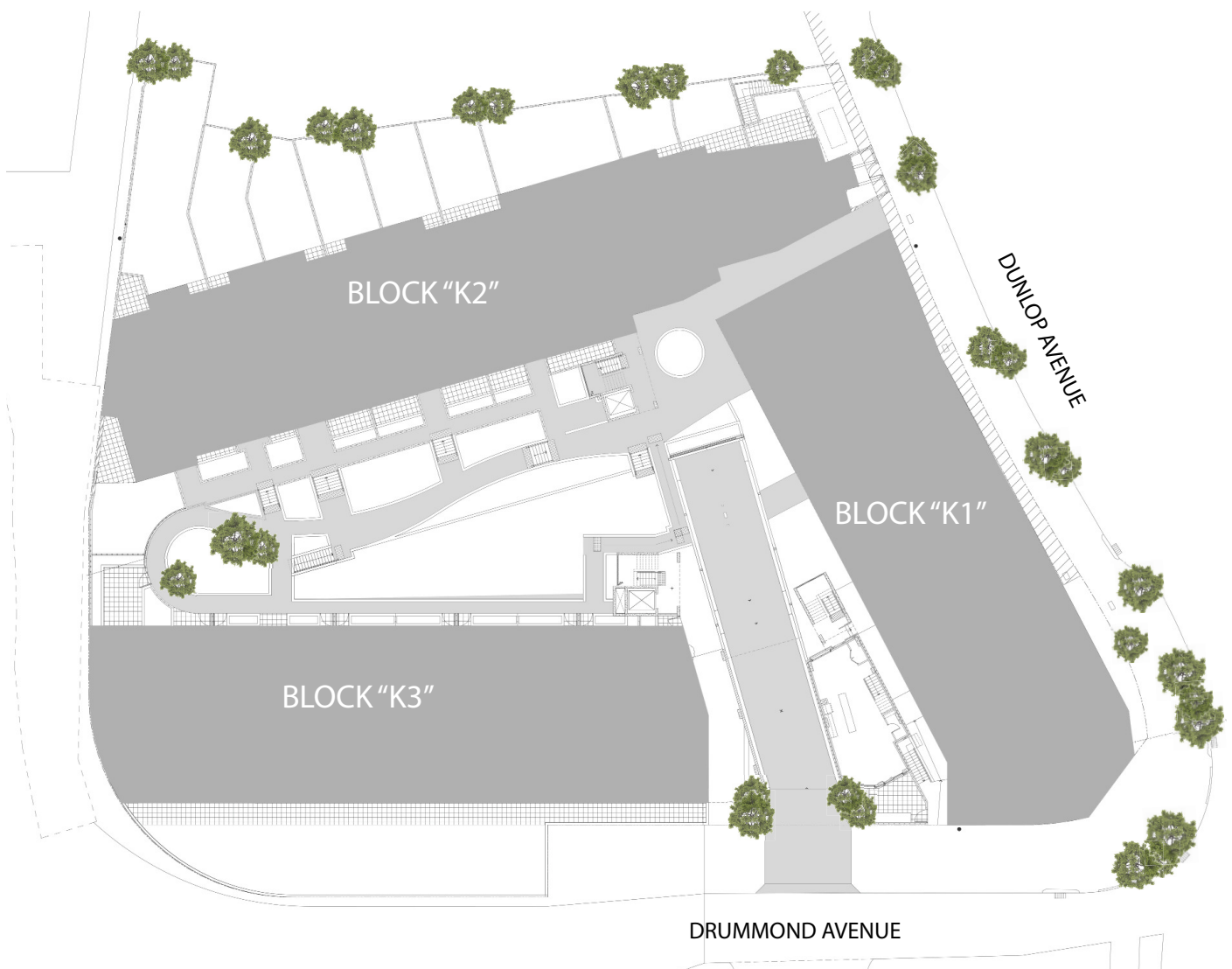
BLOCK "K1" LOT 104, DUNLOP AVE, ROPES CROSSING



1/127 MAGOWAR STREET, GIRRAWEE NSW 2145
PH: (02) 9636 2465 | FACSIMILE: (02) 9688 4762
E-MAIL : INFO@BATHLA.COM.AU

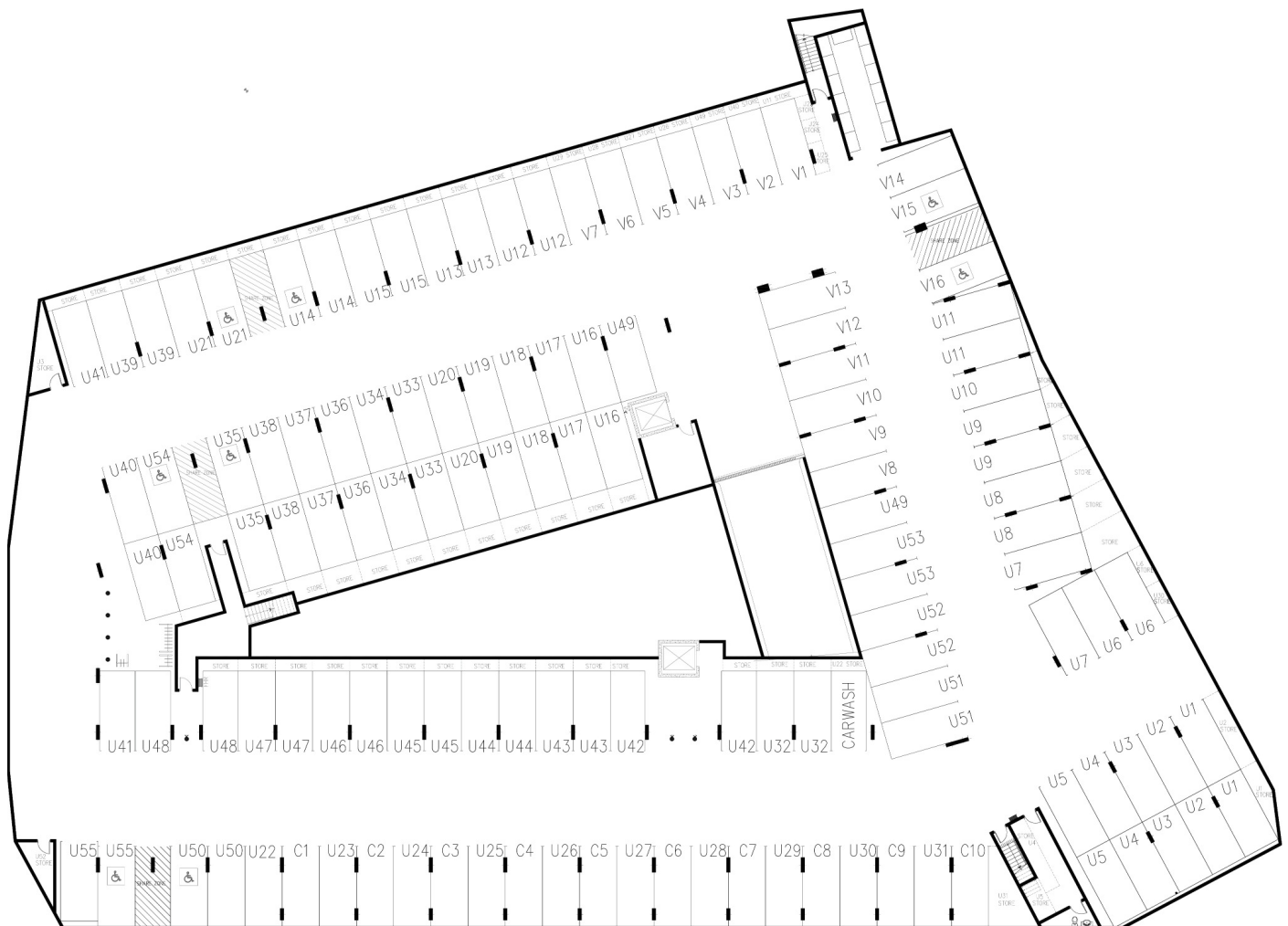


SITE PLAN

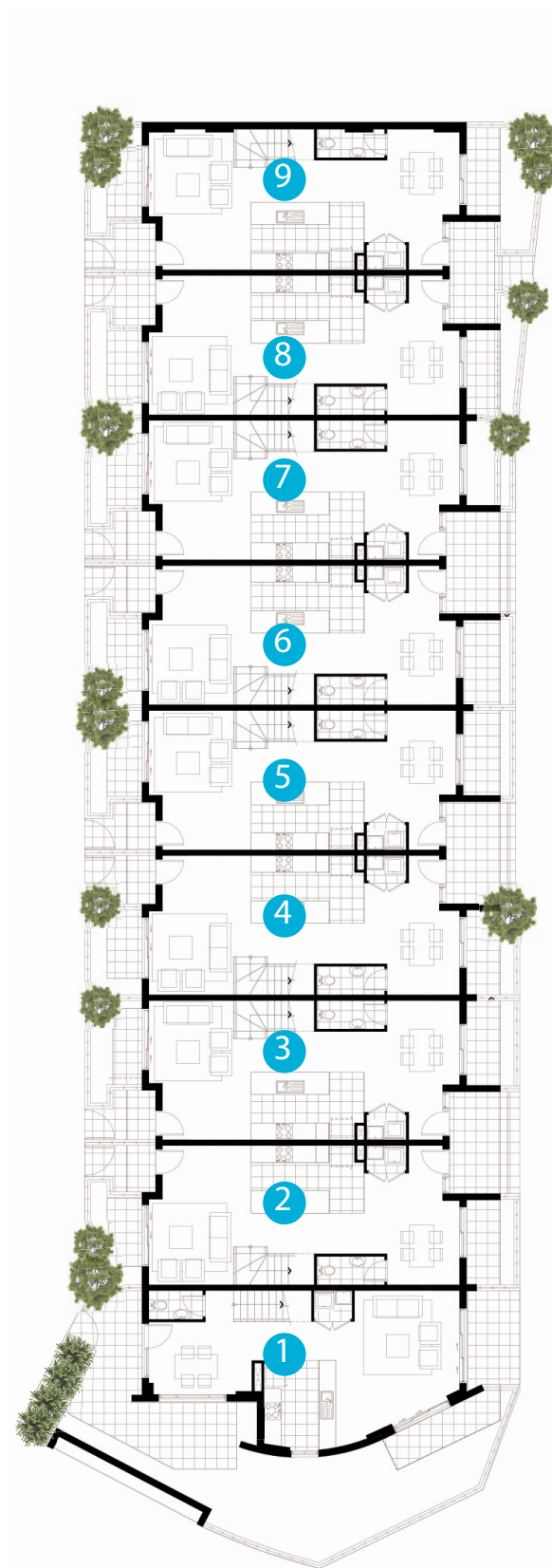


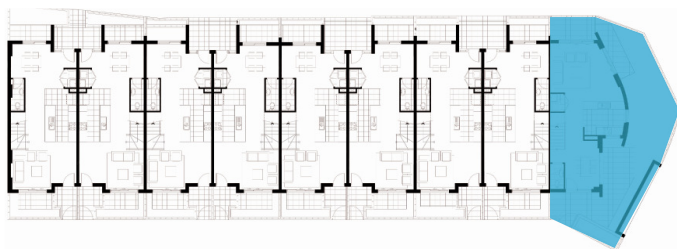


BASEMENT



GROUND LEVEL

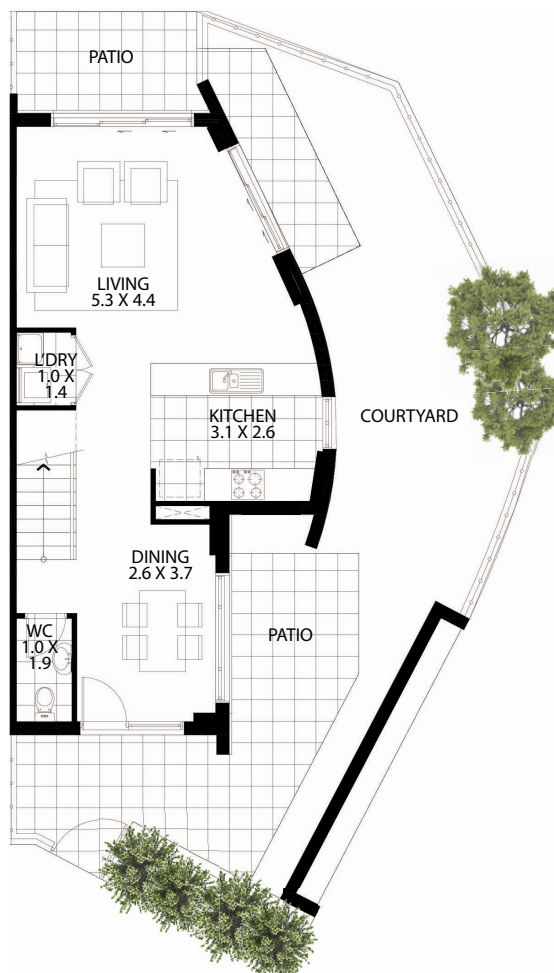




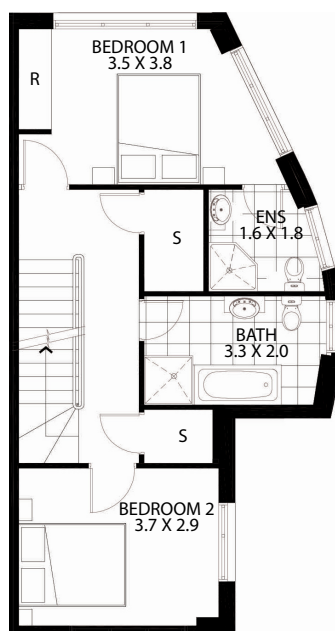
UNIT LOCATION - GROUND LEVEL



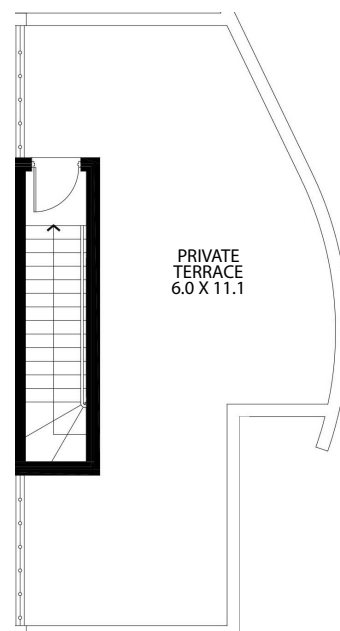
3D VIEW






LOWER LEVEL



UPPER LEVEL

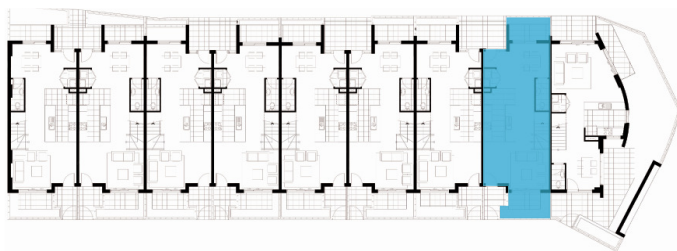


ROOF LEVEL

			LOWER LEVEL	UPPER LEVEL	COURTYARD, PATIO + TERRACE	CARSPACE + STORAGE	TOTAL AREA
2	2	2	56 m ²	57 m ²	121 m ²	32 m ²	266 m ²



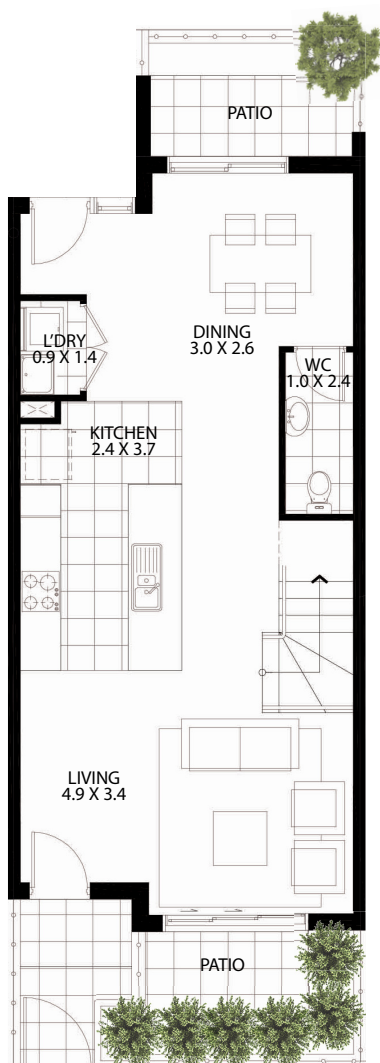
N



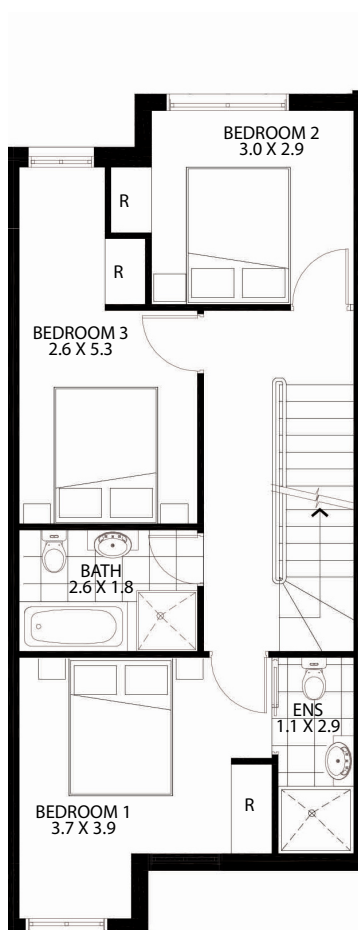
UNIT LOCATION - GROUND LEVEL



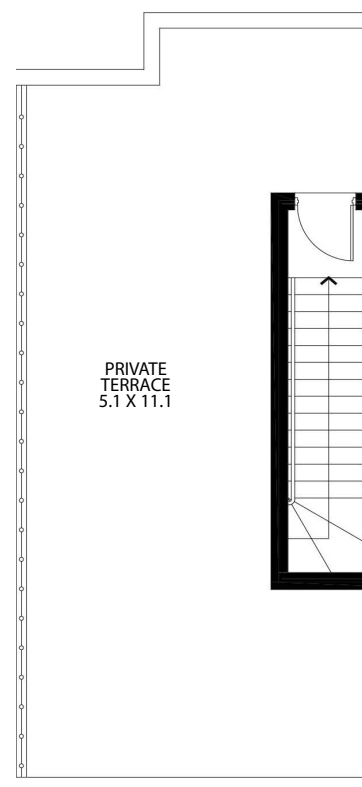
3D VIEW






LOWER LEVEL



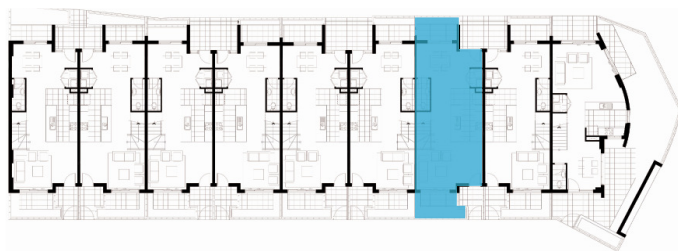
UPPER LEVEL



ROOF LEVEL

			LOWER LEVEL	UPPER LEVEL	PATIO + TERRACE	CARSPACE + STORAGE	TOTAL AREA
3	2	2	57 m ²	60 m ²	75 m ²	33 m ²	225 m ²

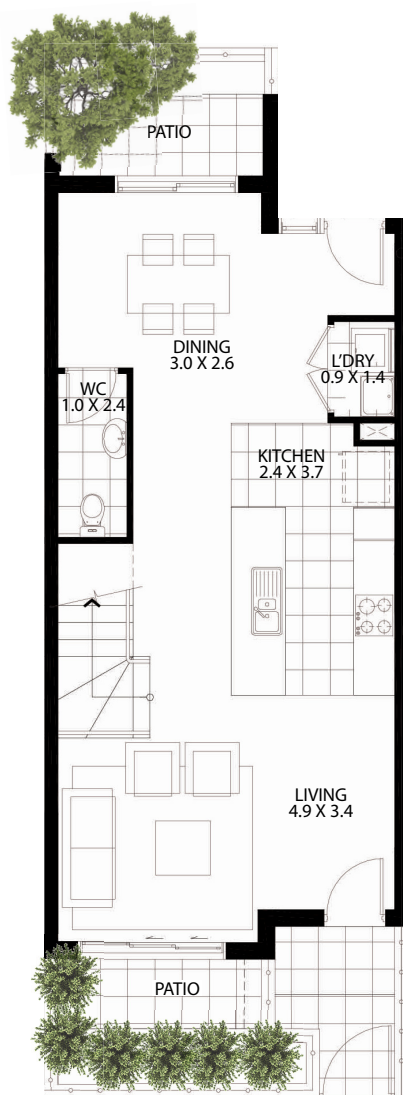




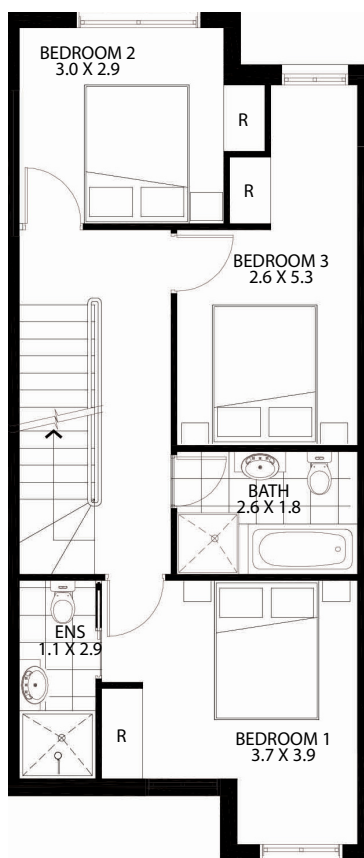
UNIT LOCATION - GROUND LEVEL



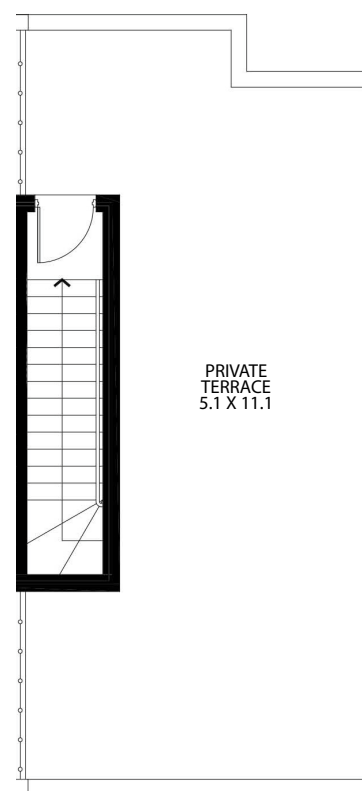
3D VIEW






LOWER LEVEL



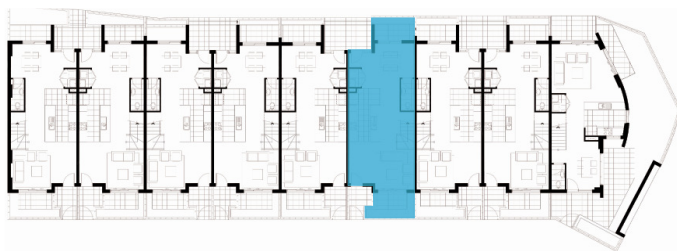
UPPER LEVEL



ROOF LEVEL

			LOWER LEVEL	UPPER LEVEL	PATIO + TERRACE	CARSPACE + STORAGE	TOTAL AREA
3	2	2	57 m ²	60 m ²	75 m ²	35 m ²	227 m ²

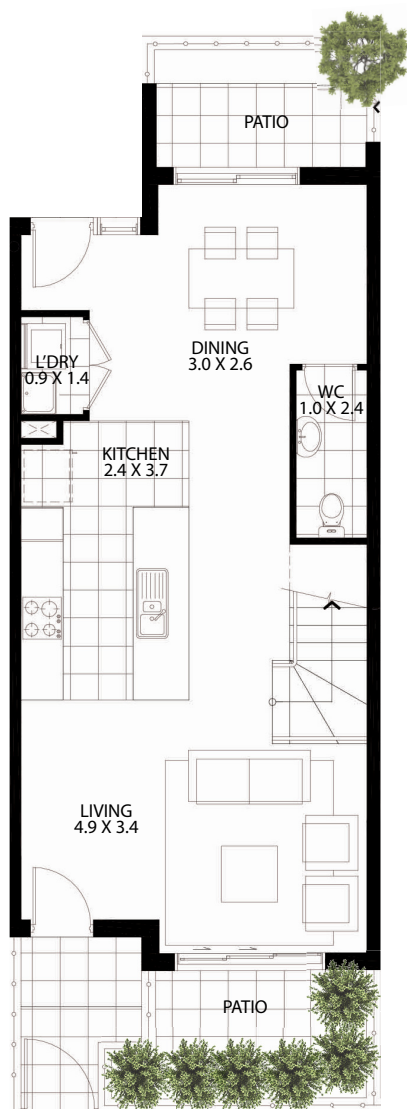




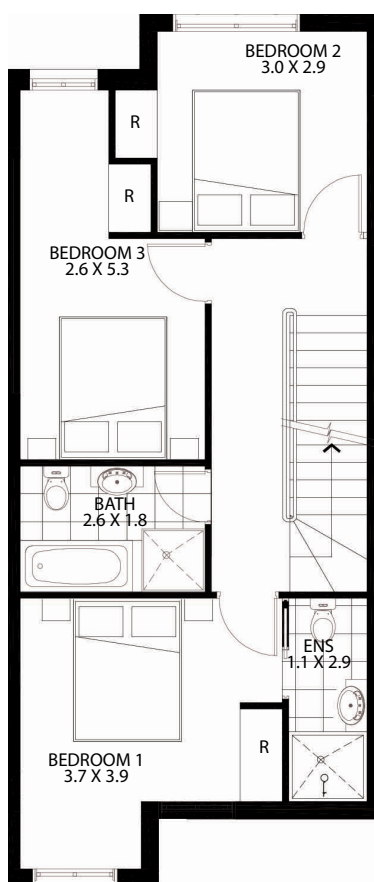
UNIT LOCATION - GROUND LEVEL



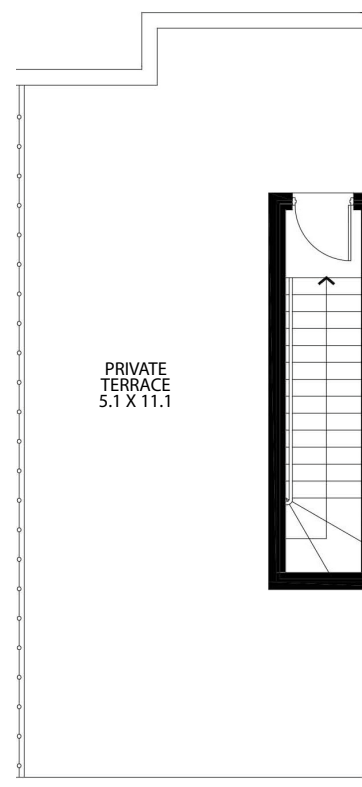
3D VIEW



LOWER LEVEL



UPPER LEVEL



ROOF LEVEL

			LOWER LEVEL	UPPER LEVEL	PATIO	CARSPACE + STORAGE	TOTAL AREA
3	2	2	57 m ²	60 m ²	75 m ²	32 m ²	224 m ²

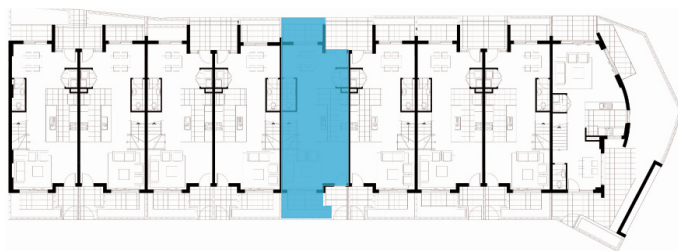




Western Sydney
PROPERTY GROUP

5

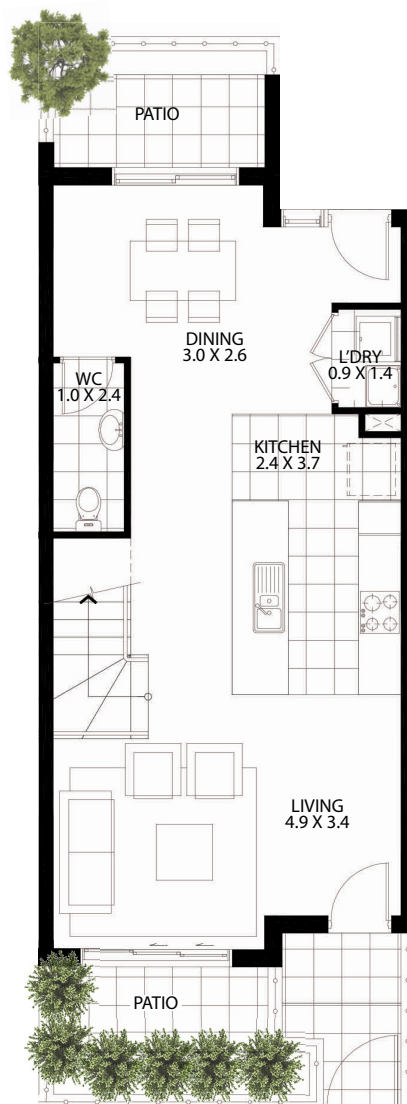
BLOCK "K1", 104 DUNLOP AVENUE ROPES CROSSING



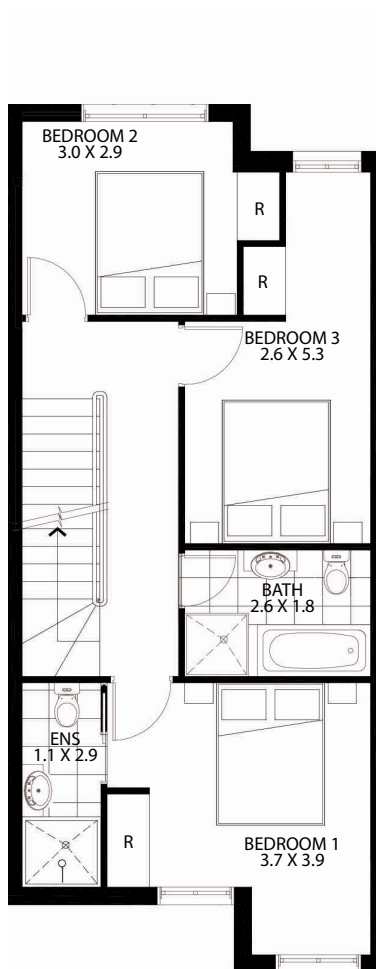
UNIT LOCATION - GROUND LEVEL



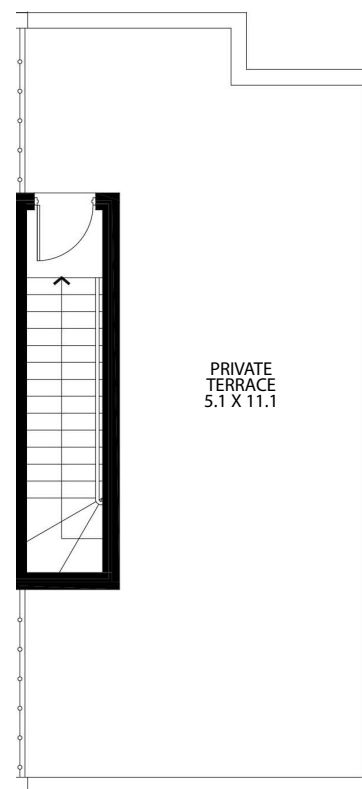
3D VIEW



LOWER LEVEL



UPPER LEVEL

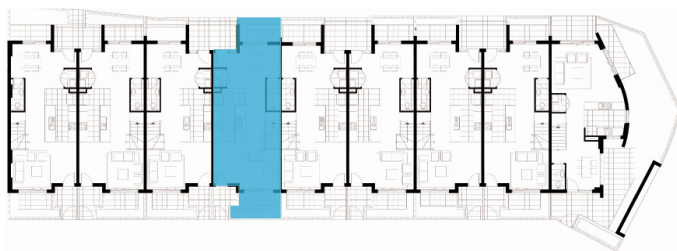


ROOF LEVEL

			LOWER LEVEL	UPPER LEVEL	PATIO + TERRACE	CARSPACE + STORAGE	TOTAL AREA
3	2	2	57 m ²	60 m ²	75 m ²	30 m ²	222 m ²



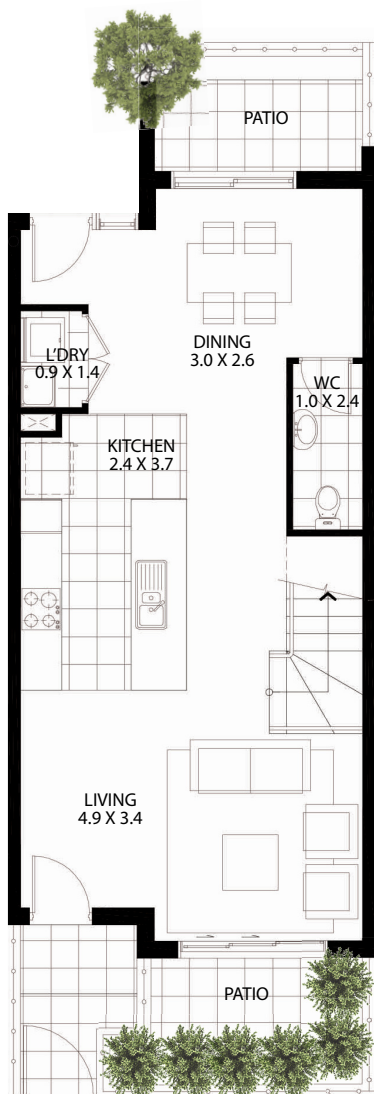
Area quoted to be used as guide only. This plan is for illustration purposes only. All information contained is gathered from sources deemed to be reliable. We have no doubt it is accurate however we cannot guarantee it. Areas are subject to final survey. Layout may change due to final council approval. The marketing plan and strata plan area will vary because of the different methods of calculation adopted. The marketing plan area is based on gross floor areas while the strata area is based on Strata Schemes (Freehold Development) Act 1973. Note: Store(S), Robe(R), bath fixtures, laundry fixtures & kitchen joinery fixtures, form part of sales package. TV and other items such as credenza, sofa, study desk, TV units & beds are not included as part of sale. Windows and doors sizes are indicative and subject to change based on legislative approval.



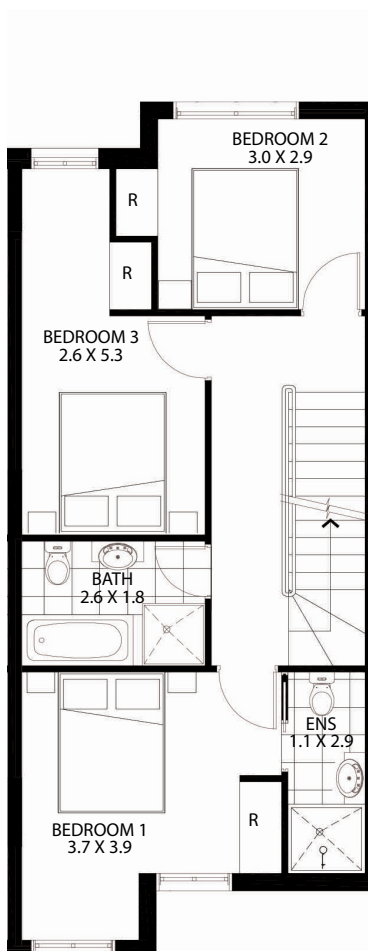
UNIT LOCATION - GROUND LEVEL



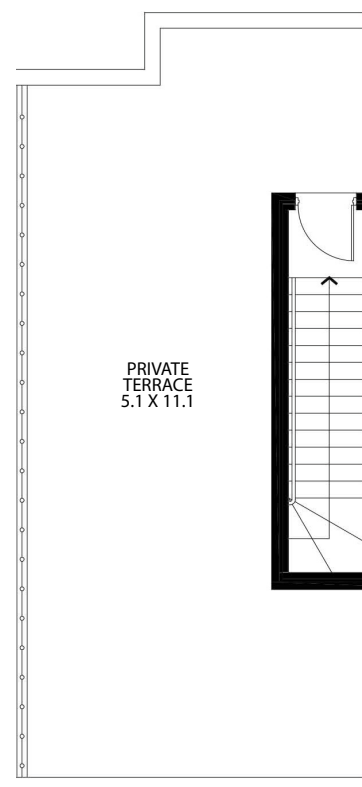
3D VIEW






LOWER LEVEL



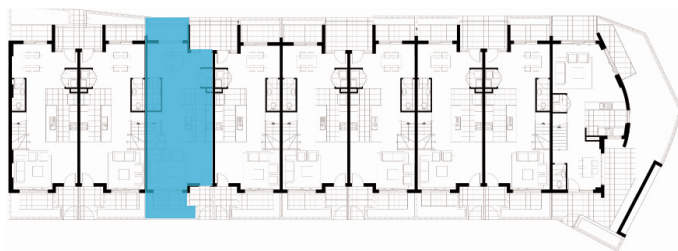
UPPER LEVEL



ROOF LEVEL

			LOWER LEVEL	UPPER LEVEL	PATIO + TERRACE	CARSPACE + STORAGE	TOTAL AREA
3	2	2	57 m ²	60 m ²	75 m ²	30 m ²	222 m ²

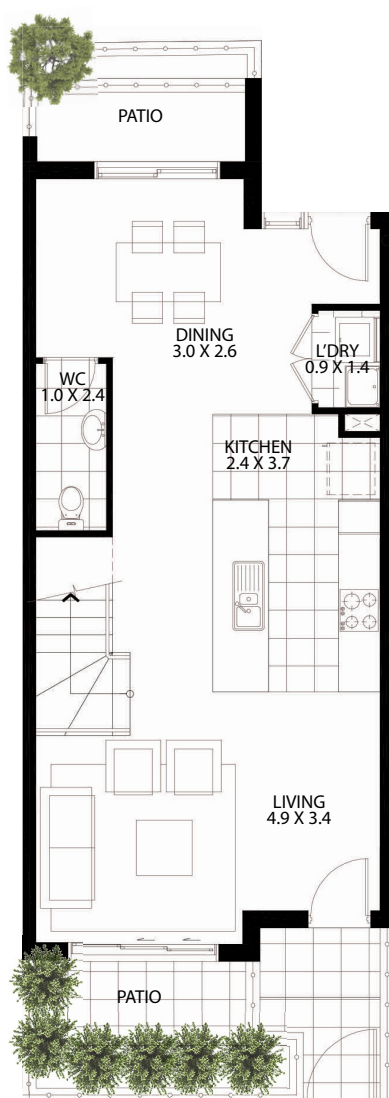




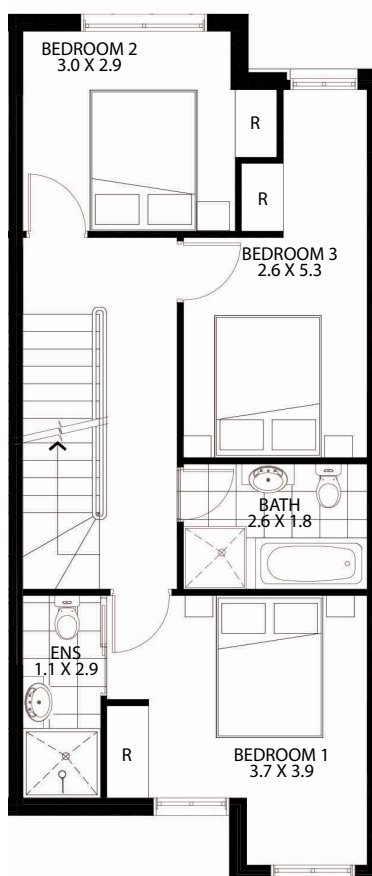
UNIT LOCATION - GROUND LEVEL



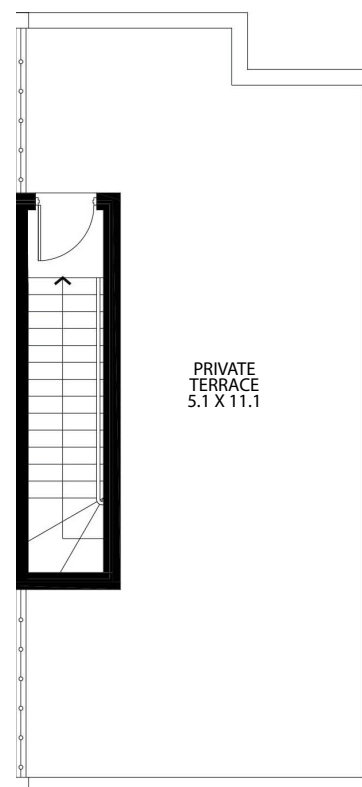
3D VIEW






LOWER LEVEL



UPPER LEVEL

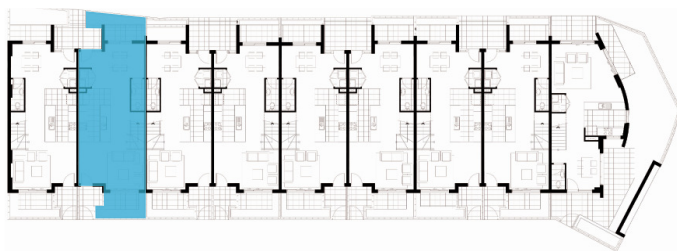


ROOF LEVEL

			LOWER LEVEL	UPPER LEVEL	PATIO + TERRACE	CARSPACE + STORAGE	TOTAL AREA
3	2	2	57 m ²	60 m ²	75 m ²	36 m ²	228 m ²



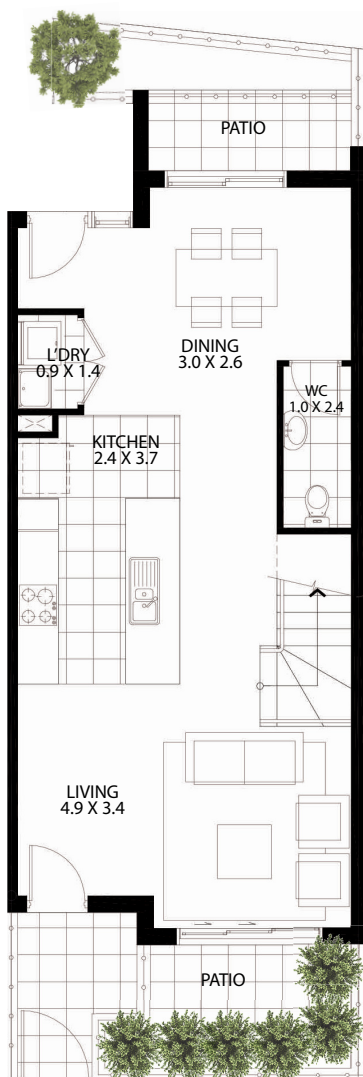
N



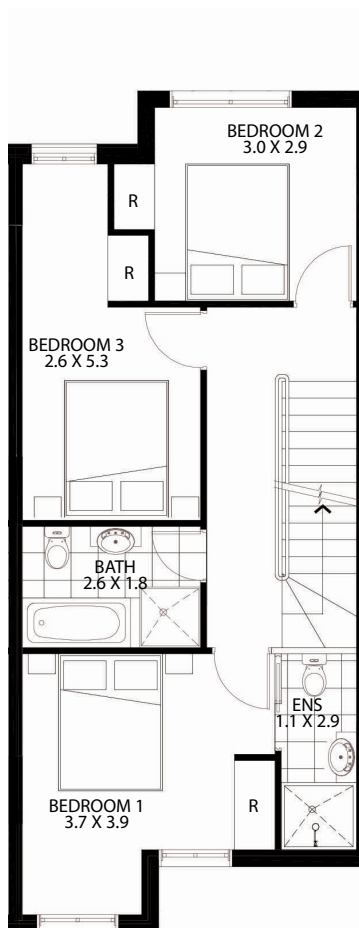
UNIT LOCATION - GROUND LEVEL



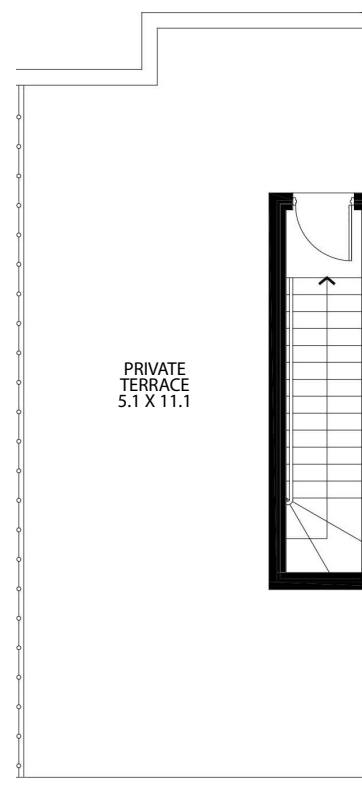
3D VIEW






LOWER LEVEL



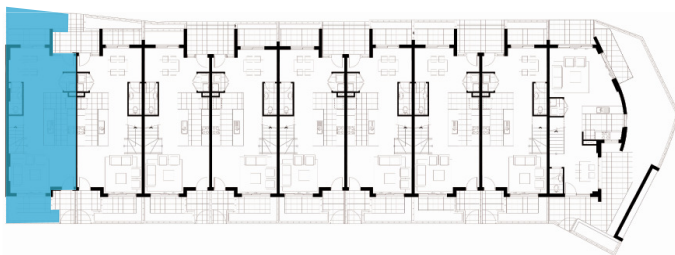
UPPER LEVEL



ROOF LEVEL

			LOWER LEVEL	UPPER LEVEL	PATIO + TERRACE	CARSPACE + STORAGE	TOTAL AREA
3	2	2	57 m ²	59 m ²	75 m ²	40 m ²	233 m ²

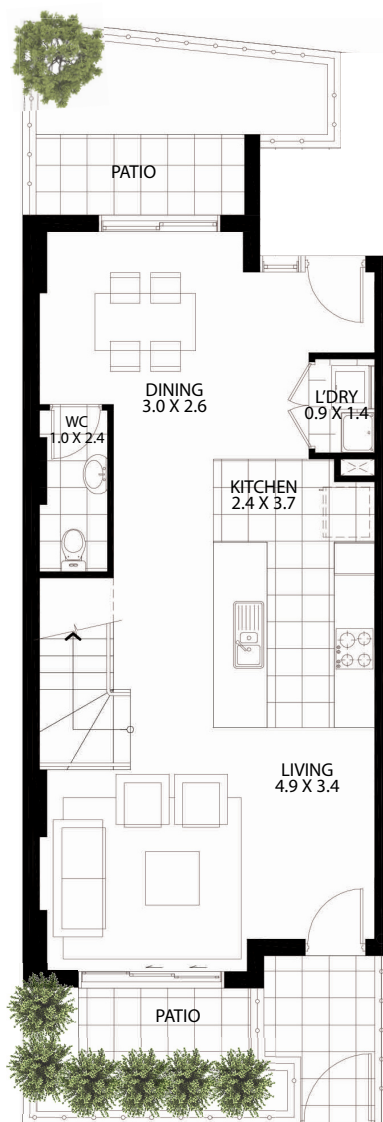




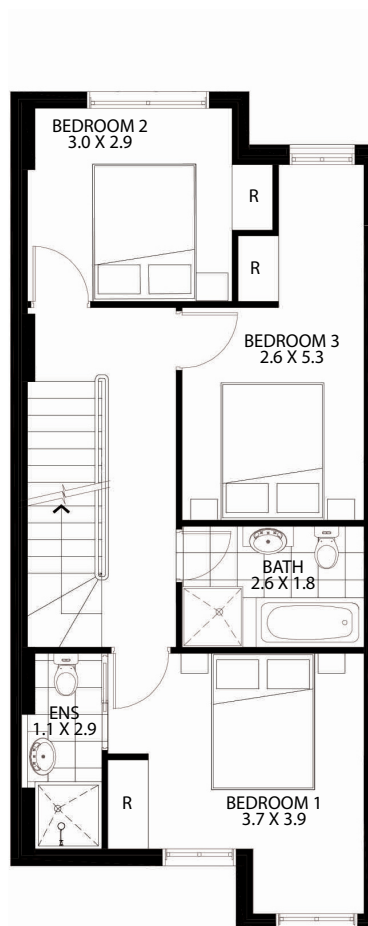
UNIT LOCATION - GROUND LEVEL



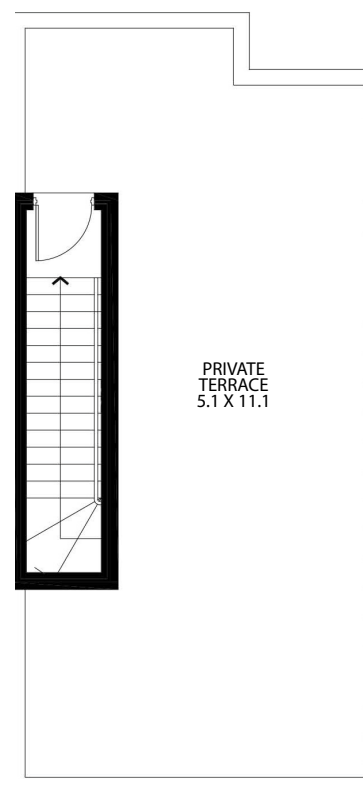
3D VIEW






LOWER LEVEL



UPPER LEVEL



ROOF LEVEL

			LOWER LEVEL	UPPER LEVEL	PATIO + TERRACE	CARSPACE + STORAGE	TOTAL AREA
3	2	2	59 m ²	62 m ²	81 m ²	35 m ²	237 m ²



N

Area quoted to be used as guide only. This plan is for illustration purposes only. All information contained is gathered from sources deemed to be reliable. We have no doubt it is accurate however we cannot guarantee it. Areas are subject to final survey. Layout may change due to final council approval. The marketing plan and strata plan area will vary because of the different methods of calculation adopted. The marketing plan area is based on gross floor areas while the strata area is based on Strata Schemes (Freehold Development) Act 1973. Note: Store(S), Robe(R), bath fixtures, laundry fixtures & kitchen joinery fixtures, form part of sales package. TV and other items such as credenza, sofa, study desk, TV units & beds are not included as part of sale. Windows and doors sizes are indicative and subject to change based on legislative approval.